



SAFE OVER SUMMER

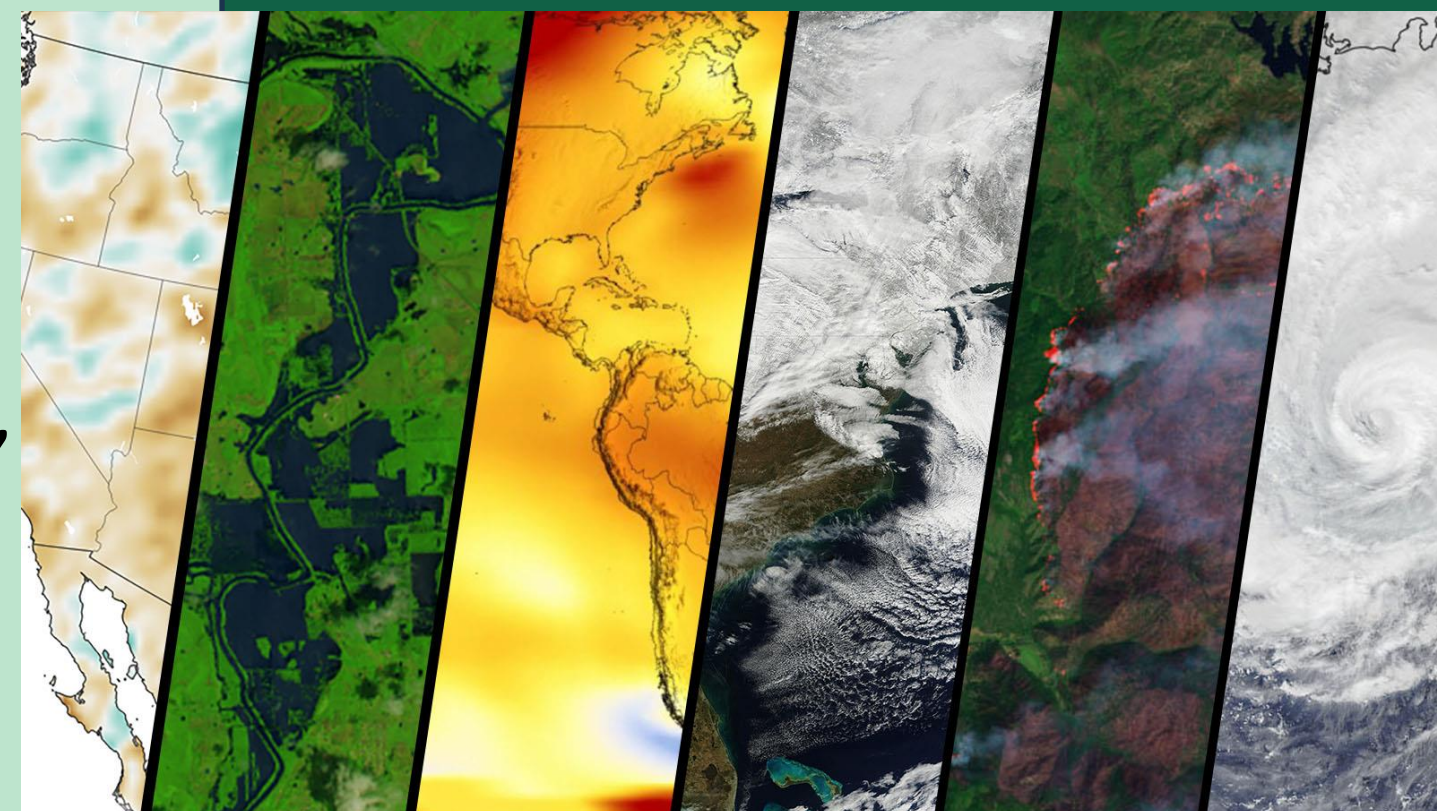
Extreme Weather Events



In Australia & New Zealand we are no strangers to extreme weather events.

Bushfires, floods, heatwaves, and severe storms can strike with little warning. These events can impact not only outdoor workers, but also anyone travelling, driving, or working on-site.

Being prepared and knowing what to do when conditions change can save lives.



Primary Risks & Hazards to Spot

- **Bushfires:** smoke inhalation, flying embers, low visibility, evacuation routes blocked.
- **Flooding:** submerged hazards, contaminated water, electrical risks, vehicle instability.
- **Storms:** falling branches or structures, lightning, slippery surfaces, loss of power.

Discuss / Share:

Has anyone been caught out by a sudden storm, bushfire or flood while travelling for work?

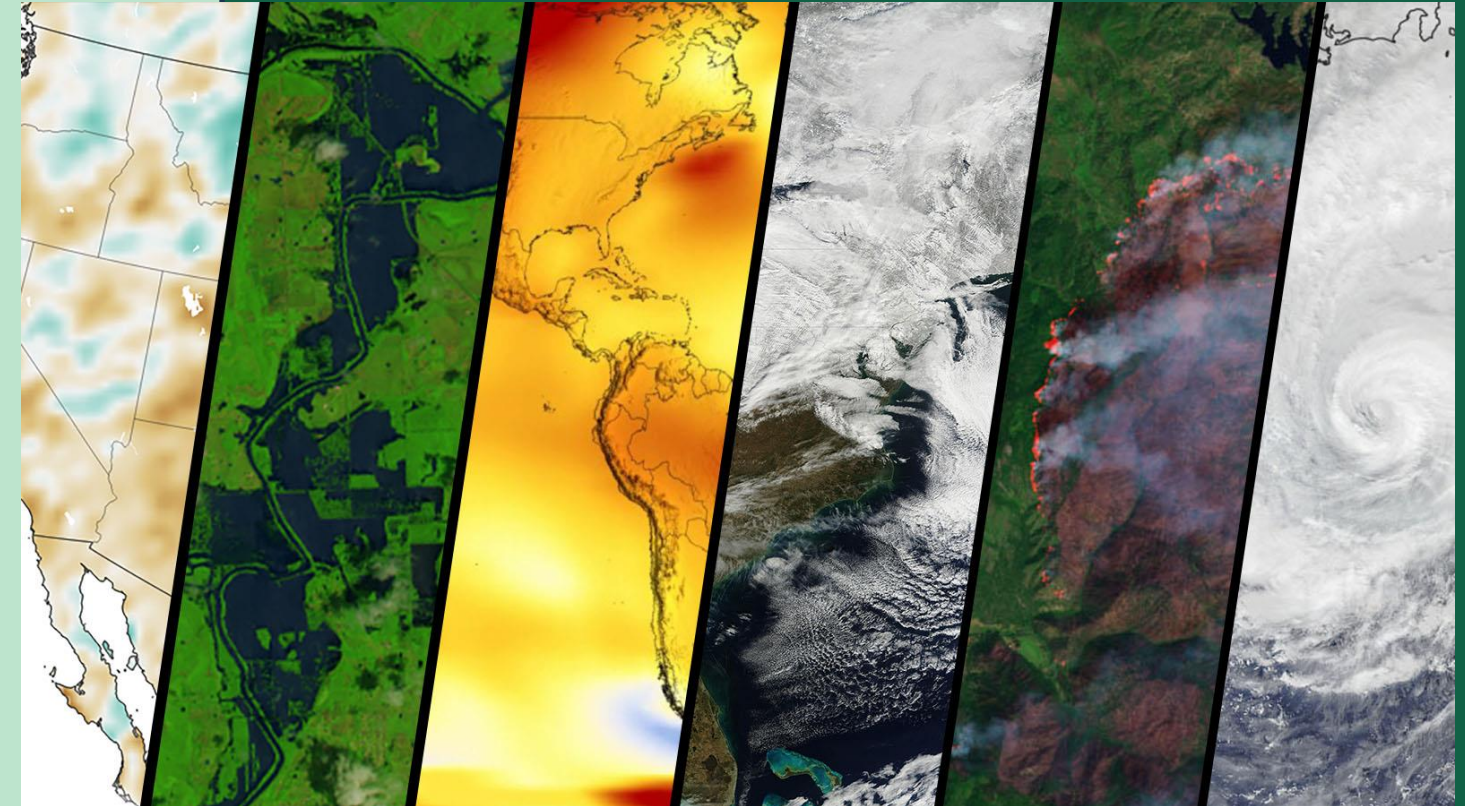


SAFE OVER SUMMER

Extreme Weather Events

Critical Controls

- Check weather forecasts and alerts (BOM, local authority, emergency apps) before and during work.
- Follow site emergency and evacuation plans immediately when warnings are issued.
- Avoid driving or walking through floodwaters.
- Stop outdoor work during lightning or extreme wind.
- Report all weather-related damage or near misses to supervisors immediately.



Discuss / Share:

What weather alerts or signs should we pay closer attention to?

How do we communicate if weather conditions suddenly change?